



NAVIS™

YACHT DESIGN & LIFESTYLE

ISSUE 85 | AUGUST/SEPTEMBER 2025

BILGIN 50M **CAMILA**



LÜRSMEN 150 YEARS

A Reign of Shipbuilding Excellence

SUPERYACHT CUP PALMA

Wind, Waves, and Winners

SONEVA JANI, MALDIVES

Luxury Redefined on Crystal Waters

DINNER BY HESTON BLUMENTHAL

Theatrical Time Travel on a Plate

AWAKEN, DUBAI

A New Era of Transformational Wellness

ASTON MARTIN VALHALLA

Precision as Provocation

www.navisyachts.com

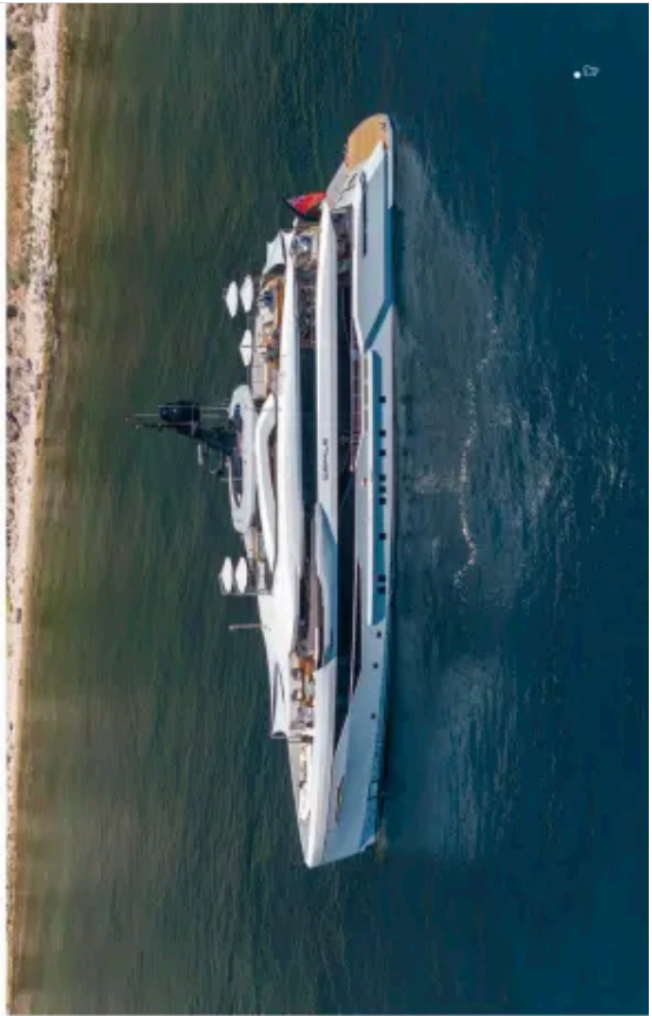


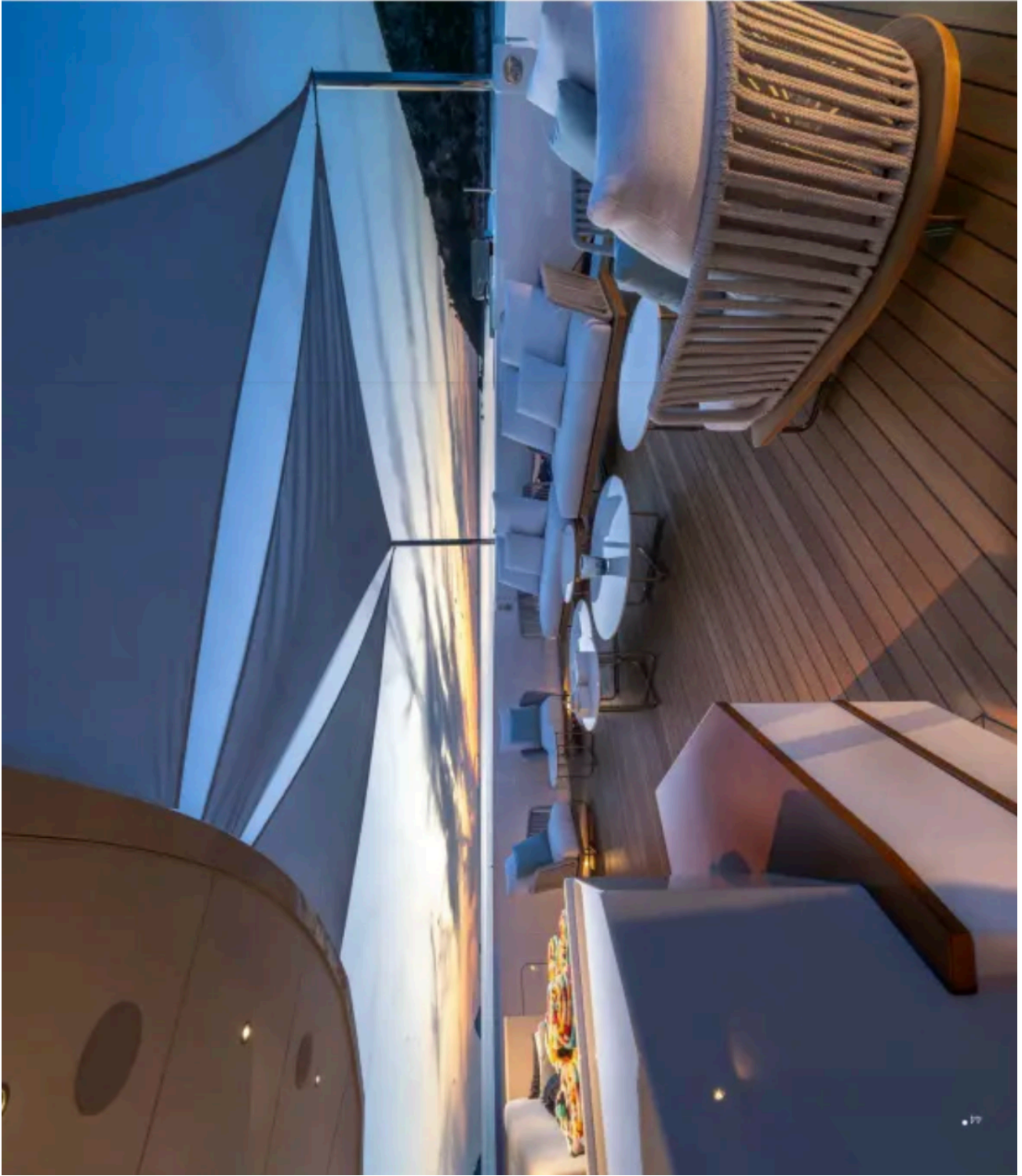
MOTOR YACHT

Bilgin 50m

CAMILIA

Photo: Bilgin-Masdi - Wanda-KL - Agency





51

Bligh Yachts unveiled the luxurious interiors of its latest masterpiece, MY Camilla, which was delivered to a US owner in June. Showcasing her 50-meter exterior at a late January launch from Bligh's sister boat yard, Camilla displayed her crisply defined curves from Unique Yacht Design's. Recently, her palette of interior hues, inspired by nature, highlighted the fresh, elegant, and balanced blend of Hot Lab throughout the yacht, effortlessly blending interior and exterior spaces.

Bligh takes great pride in a very high rate of satisfaction among clients, with many returning when considering their next purchase. Bligh CEO, Irmal Sengul, notes, "Today, the Bligh 163 is our most ambitious project and is a perfect example of what we can propose to the adventures of the sea." Camilla, the second yacht of the 50-meter 163 hulls after Eternal Spark, offers an exciting visual explanation of such adventures.

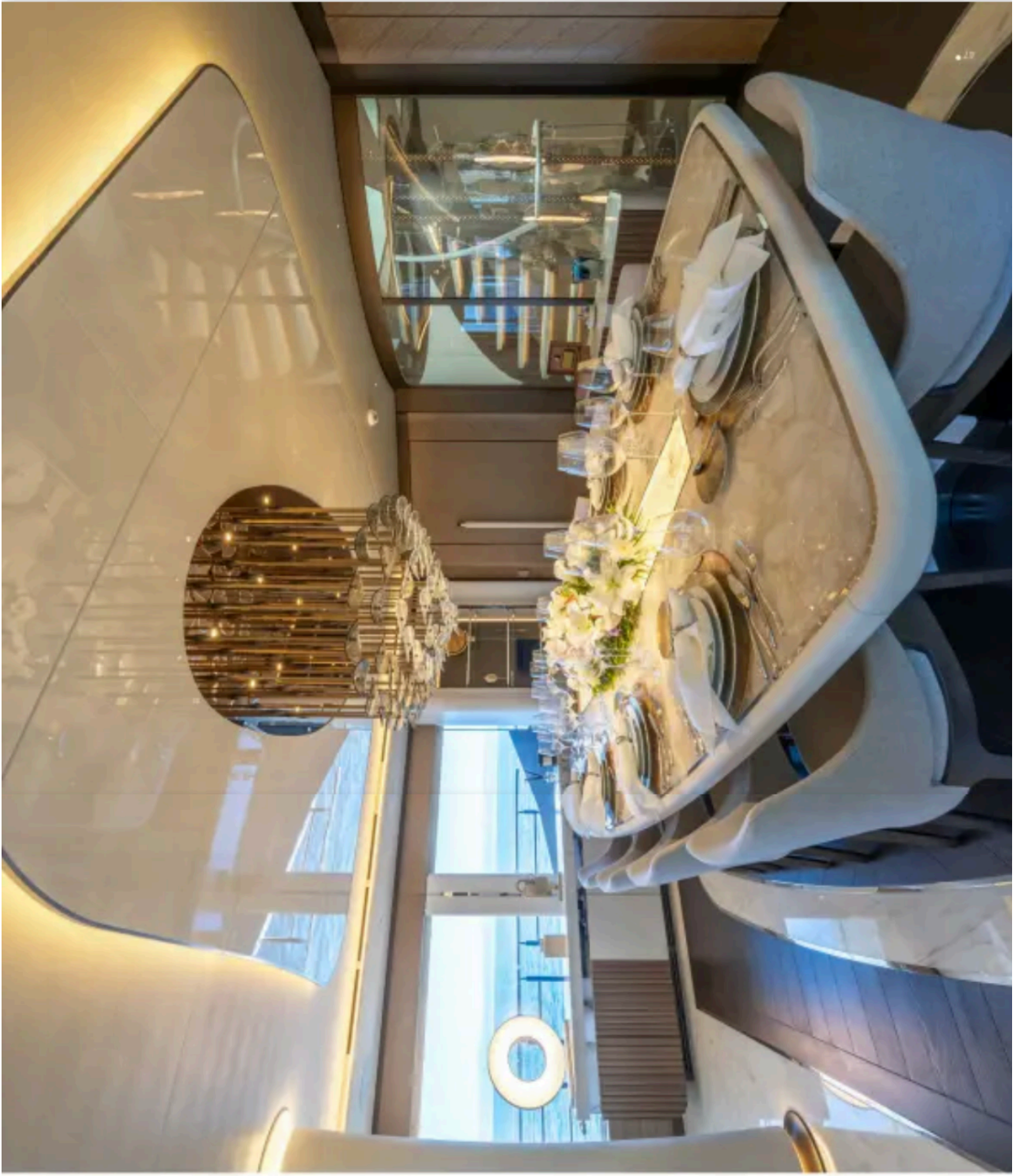
Camilla By The Numbers

As the naval architect for the project, exterior design and system design for Camilla were created by Unique Yacht Design in Antalya, Turkey. Interior design is from the UK studio of Hot Lab. Both firms also performed similar work for Bligh's Eternal Spark, the first yacht of the 163 series.

Camilla stretches 49.95 meters in length, with a 41.25-meter waterline. Her beam is 9.25 meters and her draft is 2.00 meters. Fully loaded, displacement weights in at 490 tons, with 699 GT.

She is powered by two CAT C32 1081 kW Marine Diesel Engines and three 88 kW CAT C4.4 107 KVA Marine Diesel generators, giving her a range of 5,000 nautical miles at 10 knots and a top speed of 17 knots. She is fitted with a 110-kW electrical bowthruster and a four-fin electrical stabilizer. The galley is outfitted with high-end Miele equipment. The entertainment system follows suit with a highly regarded Savant/Lutron system.

The cabins, located on four decks, include one master cabin, one VIP cabin, two double-bed guest cabins, two twin-bed guest cabins, one captain's cabin, and four crew cabins. She also has two saloons and a beach club. In all, Camilla carries 12 guests in six cabins, served by 9+1 crew.



The Main Deck Salon and Dining Area

A chic combination of Italian style and masterful craftsmanship, the main salon offers extraordinary views through large windows, slices of mirrored wall surfaces, mosaics woven with wood, and stone flooring. A subtle palette of natural soft goods in soothing neutral shades is accented by a latex-resin collection of loose pillows. Reflections of the room dance about the glass and narrow strips of mirror, glazing artfully courtesy of the dining room chandelier. The feeling is super spacious, and the mosaic views add magic and mystery to the mood.

Forward of the saloon, the dining space continues the theme, with a dozen dining chairs, placed around a slightly rectangular table. The chairs, upholstered in a soft sand, are a lovely contrast to the sassy lit and beautifully sculpted glass scoops hanging from the chandelier.

Forward of the dining space, the wooden mosaics add visual texture to the doors, while a curved glass wall surrounding the curved free-floating stair issues a contemporary note. Forward of the stairwell, a pantry and galley sit to port with lobby access to the owner's cabin and a day head to starboard. A thoughtfully crew lobby, dry storage, and crew stair are tucked into the center.

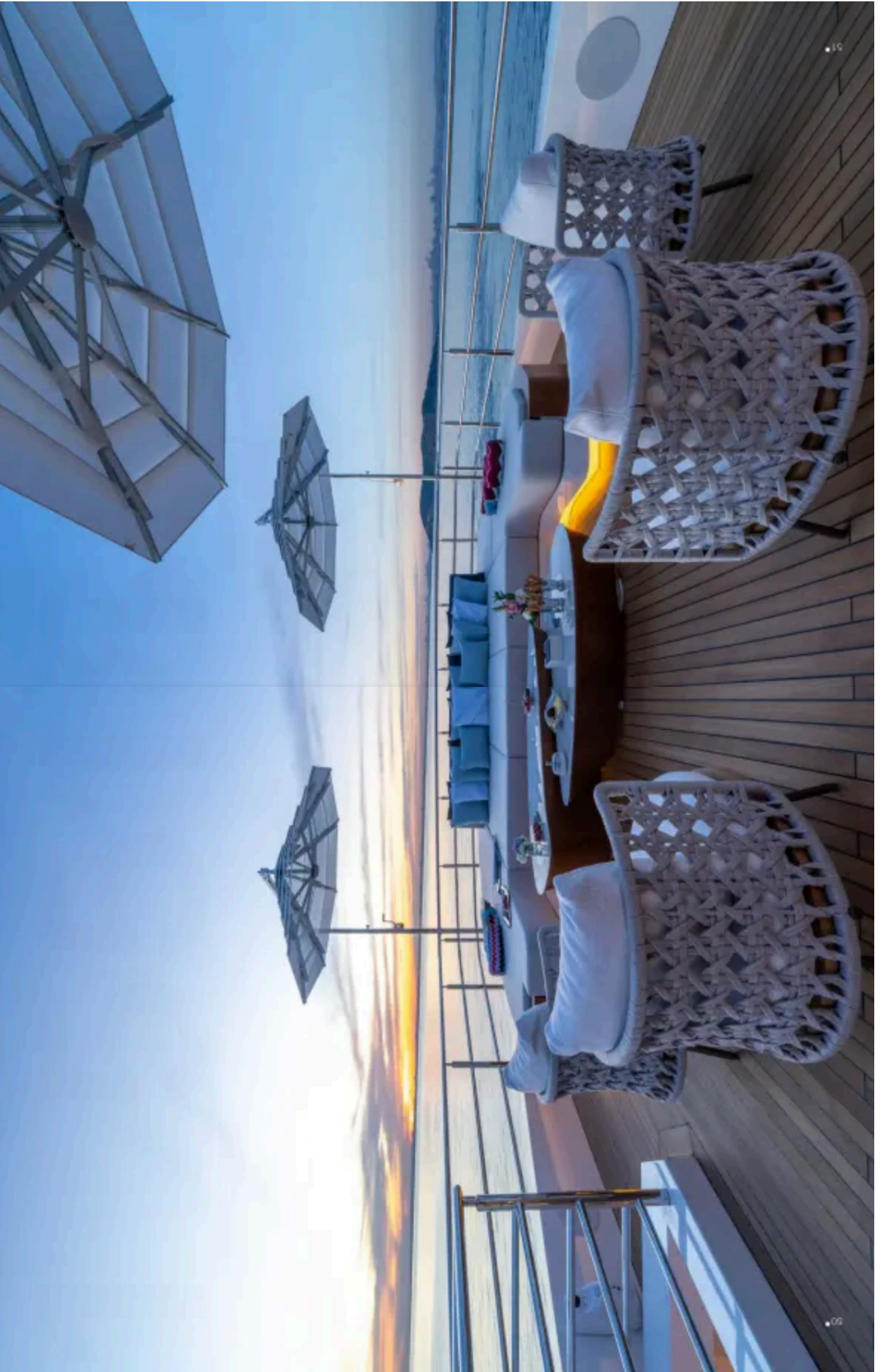
The Main Deck Owner's Cabin

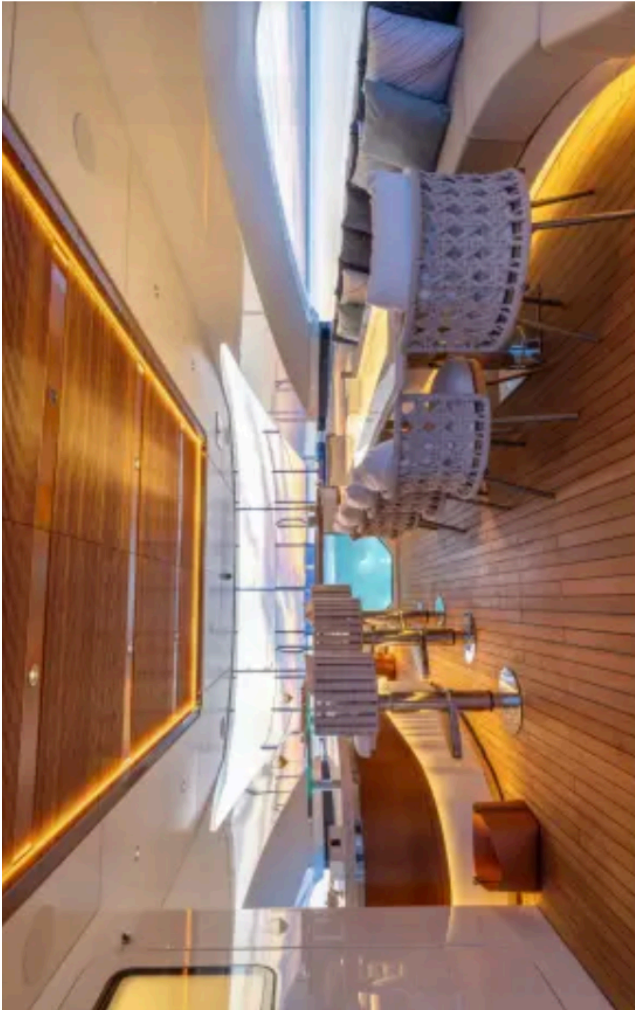
Entry to the fully forward main deck Owner's Cabin routes through the private office, with a stone/stone oak, soft sand sofa, and a pair of built-in bookshelves. Richly textured and embellished with featured woods, metal-mesh laminated glass, touches of gleaming chromed stainless steel, and deeply plush Italian carpets provide a most relaxing enclave with a slightly understated elegance that whispers, rather than shouts. **"This is your perfect peace."**

The Owner's cabin includes an excellent array of hanging space, shaving, and storage in the spacious walk-in closet. The bath is finished in subtle marbles and matching woods, with important yet low-key lighting where it matters most. Chrome hardware brightens the look further, with a large glass shower, and separate toilet and bidet.

Generous head heights grace all living areas. Low bulwarks and large windows all contribute to the intoxicating views. Camilla offers her guests.







The Lower Deck VIP Cabin

Matching the Owner's cabin in nearly every aspect, the lower deck VIP cabin is created with curves and natural materials, inspiring a sense of calm luxury. Located amidships, the VIP is set abate opposite a pair of casual round lounge chairs. A U-shaped sofa sits fully aft, overlooking the beach club. Lots of seating and a lovely outdoor dining and entertaining space, these areas sit both to the main deck and the sun deck sitting to starboard.

The bath, artfully executed in marble, glass, the woods, and subtle bronze leant from nature, is one emitting relaxed sophistication. A seating area with contemporary mid-century modern upholstered chairs set in front of bookshelves and a series of windows adds to the feeling of spaciousness.

Additional Lower Deck Cabins

Just forward of the VIP cabin, two double en suite cabins match port and starboard, with similar decor and an excellent capacity to calm and soothe with soft textiles in harmonious natural palettes. Baths are located aft, against the forward wall of the VIP cabin. Entry is through the hall running forward and aft from the central staircase.

Forward of the double cabins and the stair, there are two double cabins with en suite baths set against the forward walls of the double cabins. All cabins have lovely windows offering an abundance of natural light.

The Beach Club

The spacious beach club truly shines, with a sauna, day head and shower, and ice fountain. There is a marble topped glossy white bar and cushy lounge located forward and a few steps down from the beach platform, providing an inviting entertainment space that feels intimately engaged with the sea.

The Bridge Deck and Upper Deck

Fully forward on the upper deck, the wheelhouse offers seating just in front of the captain's command station, giving guests a fantastic forward view. Aft of the wheelhouse, the captain's office and an suite cabin sit to starboard, and the captain's dining bar bulks aft to port, both surrounding the beautiful glassed-in central stair.

The bridge deck saloon is a comfy spot for smaller gatherings, with

an angled sofa to port and a dining table for eight to starboard. A day head sits to starboard just forward of the dining area.

Aft of the saloon, the extensive 12-meter aft deck provides al fresco dining for twelve. A sealed bar to port and a large, inviting solabed sits opposite a pair of casual round lounge chairs. A U-shaped sofa sits fully aft, overlooking the beach club. Lots of seating and a lovely outdoor dining and entertaining space, these areas sit both to the main deck and the sun deck sitting to starboard.

The Sun Deck

Extending 21 meters, the sun deck is possibly the most exciting space on the yacht, providing spaces for those interested in a jacuzzi dip and quick sun pad stretch fully forward, or a relaxing lounge on the round sun beds or the lounge chairs aft. In between, a dining space benefiting from the cover of the Bimini and the perfect spot for a leisurely lunch, afternoon cocktails, or even an early cuppa and croissant. There is plenty of deck space, so a sunrise yoga session also works in perfectly.

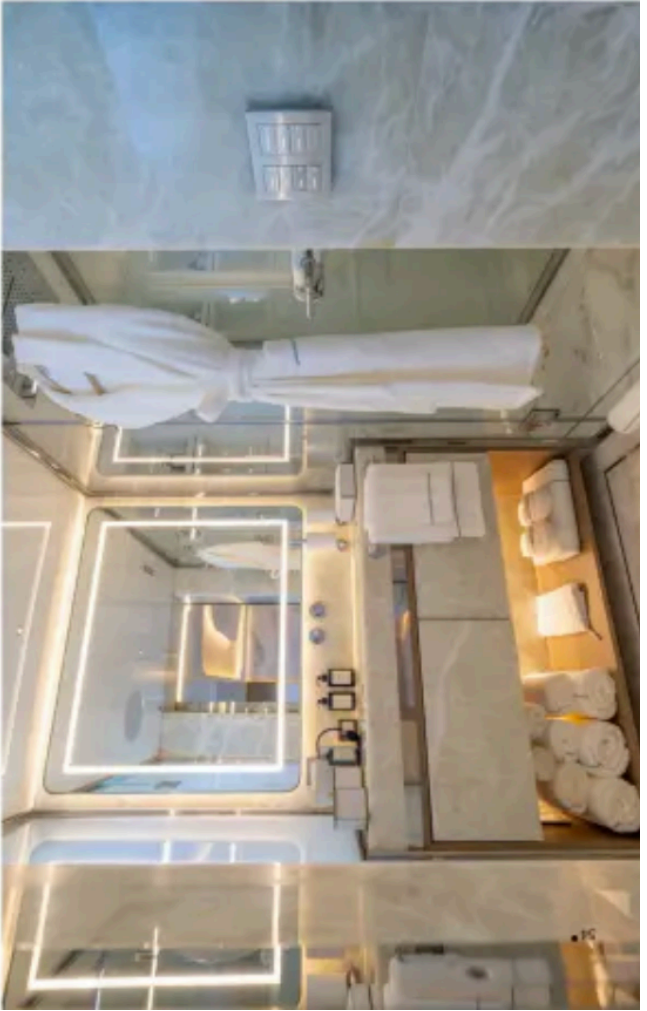
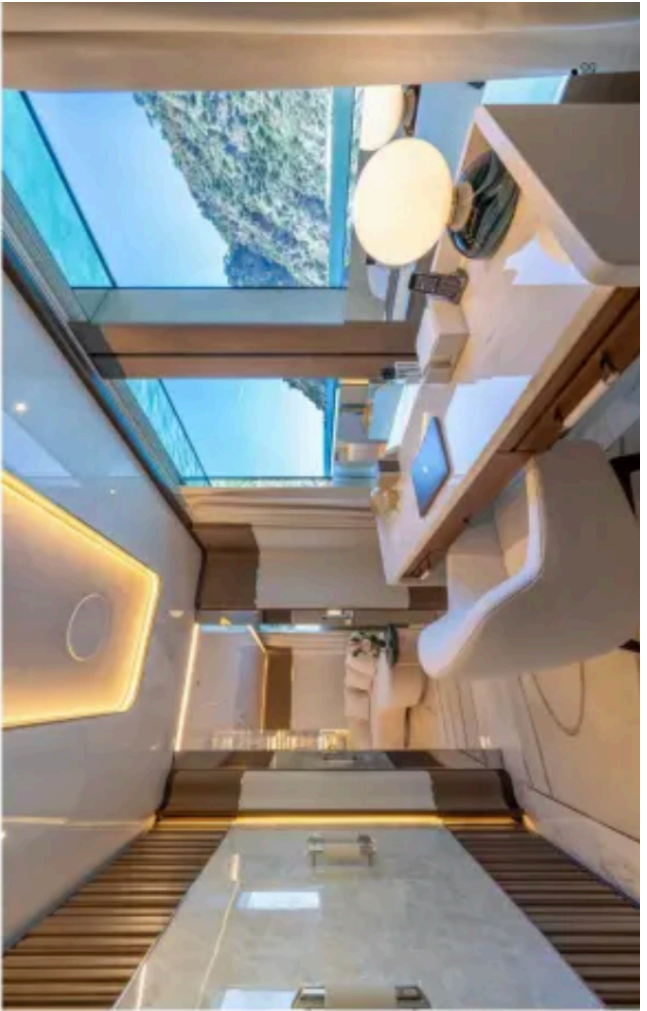
Summing Up Camilla

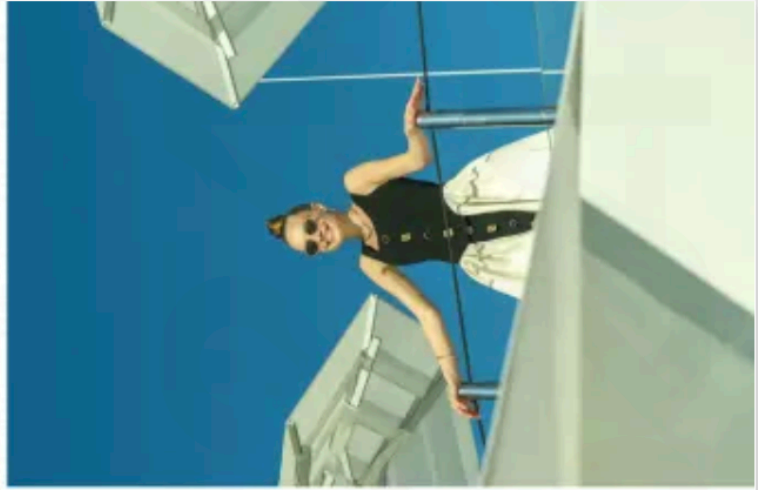
Truly remarkable use of space, with brilliant inserts of reflective surfaces and large windows. Camilla is designed to give guests the feeling of ultimate luxury and calm. No one can say it better than those who worked so well as a team to create the masterpiece.

Enrico Luneri, Partner and Head of Design at Hot Lab

acknowledged, "With Camilla, we wanted to strike a delicate balance between warmth and sophistication. This is the second 50-meter yacht we have developed for Algin," continues, "Every element on board has been carefully crafted to offer both sophistication and comfort." In summary, Luneri adds that Camilla is "A perfect mixture of design, craftsmanship and attention to every detail."

Berky Yimar, Commercial Director of Blign Yachts, adds, "We take immense pride in seeing this project come to fruition. Our team has worked tirelessly, and the result is a truly stunning yacht." Yimar added, "The distinctive elegance of Camilla will undoubtedly capture attention wherever she goes. She is another stunning yacht that will cruise to US waters, and I am grateful to work with an experienced yacht owner who was heavily involved with her design process with Hot Lab."





About Bilgin Yachts

A boutique shipyard on the European side of Istanbul, Bilgin is a family business that has continued for five generations across the 1900s to today, building bespoke 50 to 120-meter luxury superyachts. Under their umbrella, 900 skilled craftsmen perform 90 percent of the work in-house in four facilities spanning nearly 80,000 square meters.

The Yalova facility is capable of accommodating five projects between 50 and 120 meters. In Istanbul, the outfitting facility can handle five projects between 50 and 90 meters simultaneously. Additional manufacturing areas, a marine furniture factory, a comprehensive mechanical, hydraulic, stainless-steel and upholstery workshop all contribute to bring the most masterpiece from blank design sheet to launch and delivery.

Located just 40 minutes from the Istanbul Airport, the Bilgin Yachts team is at the service of those who wish to embark on the journey of building a "dream yacht to last a lifetime," as CEO Serkan puts it. ☺

Specifications

- LOA: 49.05m
- LWL at full load: 48.26m
- Beam overall: 9.25m
- Draught at full load: 2.00m
- Displacement at full load: 690 (full load)
- Maximum speed: 15.5
- Cruising speed: 12
- Range at cruising speed at half load: app. 5,000 miles

